

# GHALTAK SAZAN SEPAHAN

## Steel industry Introduction





# Holding Company

## Holding Company

Casting plant for Rings & Rolls

Casting plant for Billet Casting , Cast Iron and Heavy Steel Parts

Machining Factory



# Casting and Manufacturing Sites

GSCO

Casting plant for Billet

Casting plant for Cast Iron  
and Heavy Steel Parts



- ✓ Total Melt Capacity: 215,000 Ton per year
- ✓ Total Area: 63,000 m<sup>2</sup>

# Variety of Products



**Cement Industry**



**Auto Industry**



**Billet and Ingots**

**Main Products**

**Steel Industry**



**Steel Industry**



**Power Plant Industries**





# Casting plant for Billet

- Production of Billet by Continuous Casting



- Production of Carbon steel
- Low Alloy Steel and Alloy Steel Billet with sections :



100\*100  
120\*120  
125\*125  
130\*130  
150\*150  
160\*160

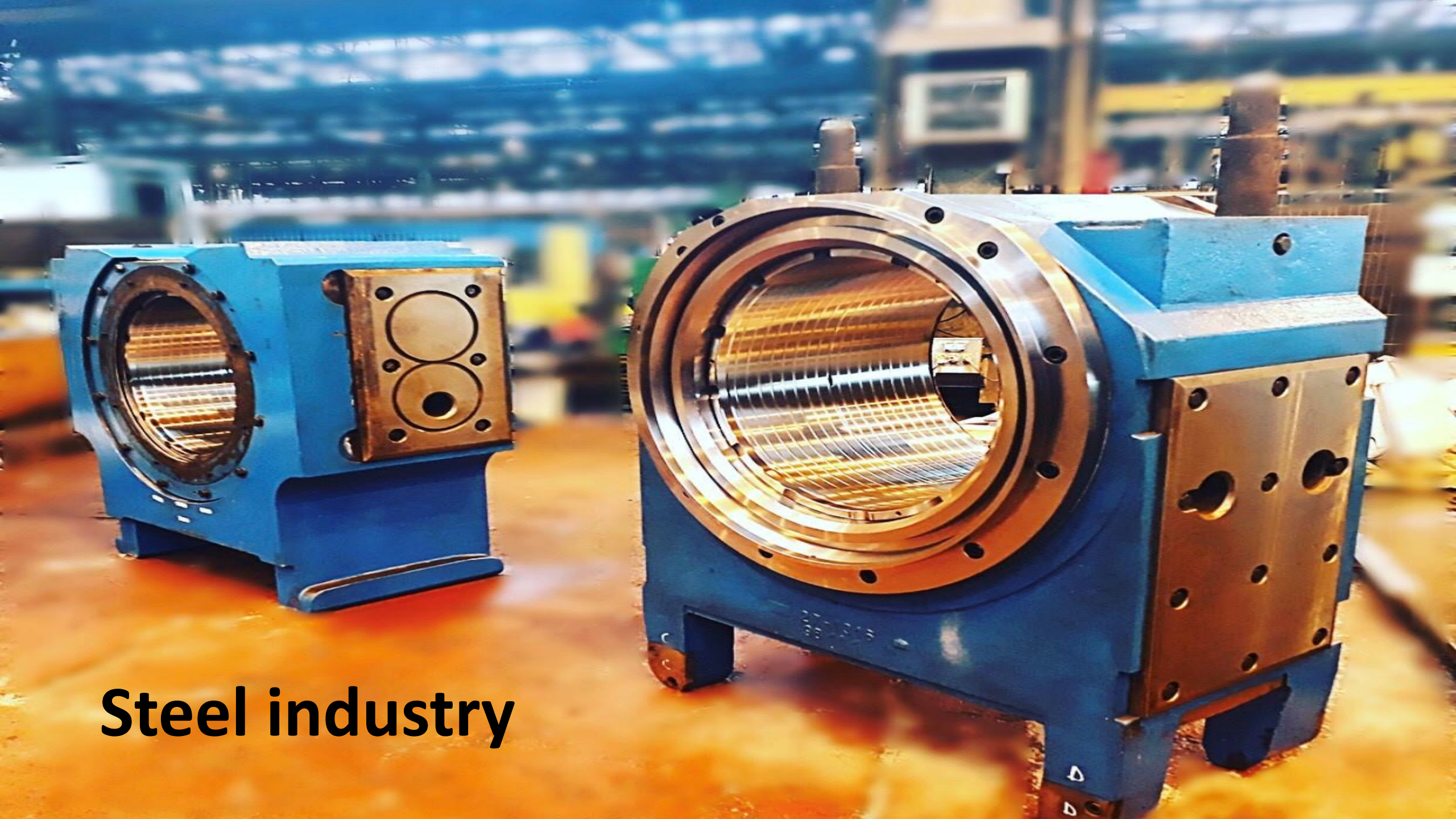


# Casting plant for Cast Iron and Heavy Steel Parts

- Production of Ingot Molds and Accessories
- Production of Cast Iron and Heavy Steel Parts up to 100 Ton







**Steel industry**

# Steel industry

## ► Introduction



# Steel industry

## ► Chock:

- One important component for Rolling mills





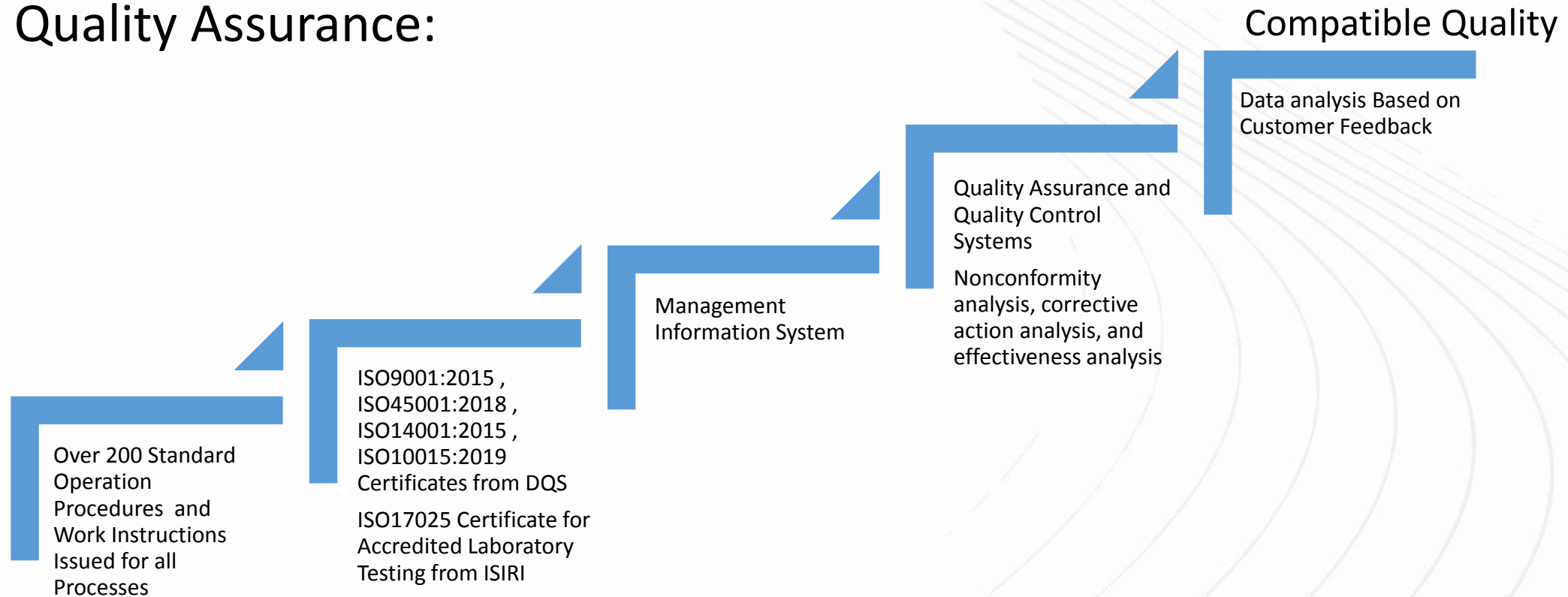
## Steel industry

### ► Design and Engineering



# Steel industry

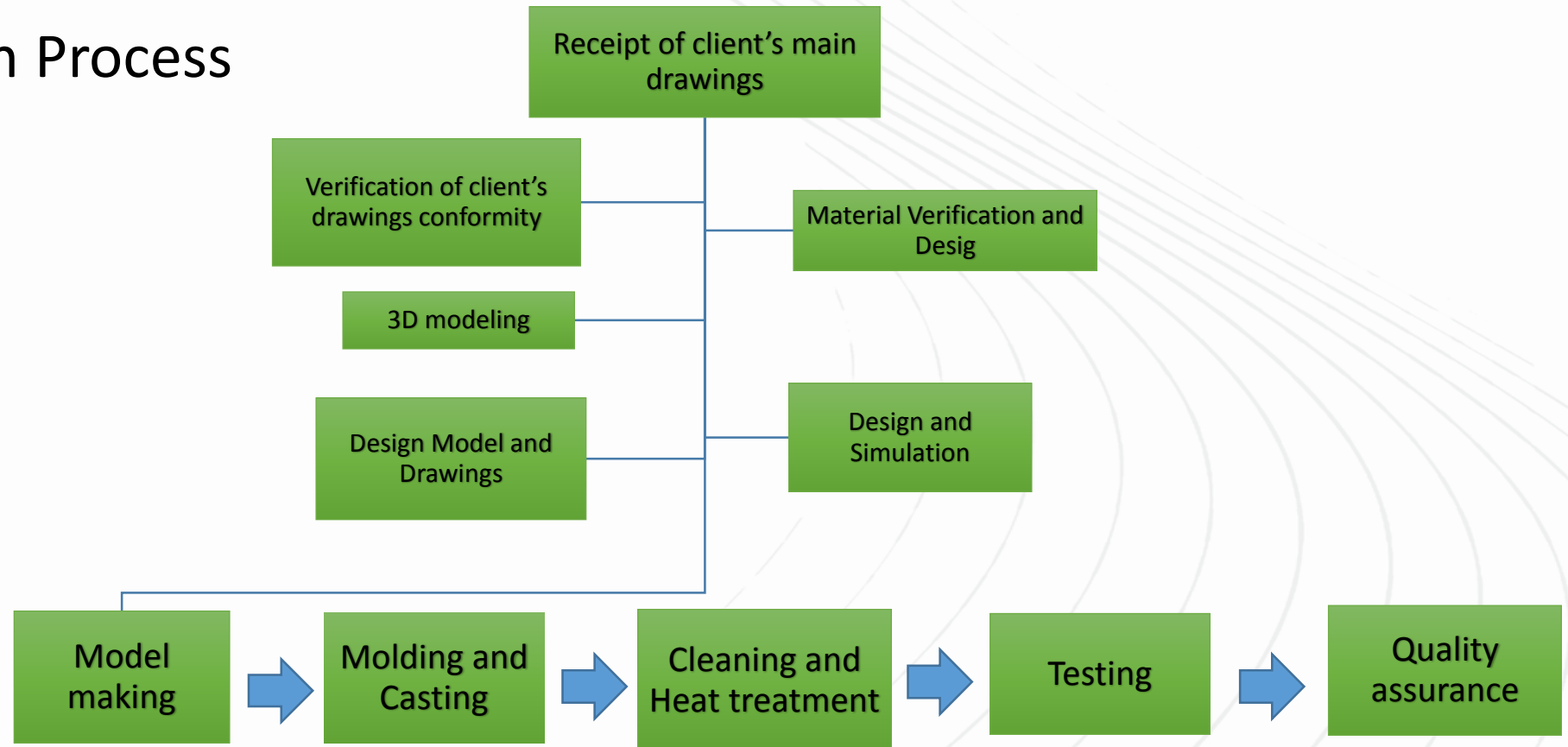
- Quality Assurance:





# Steel industry

- Production Process



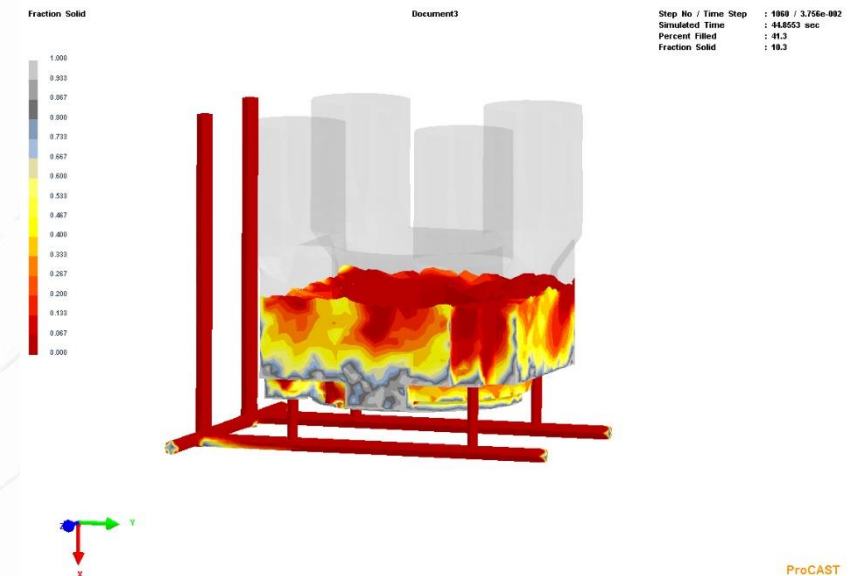
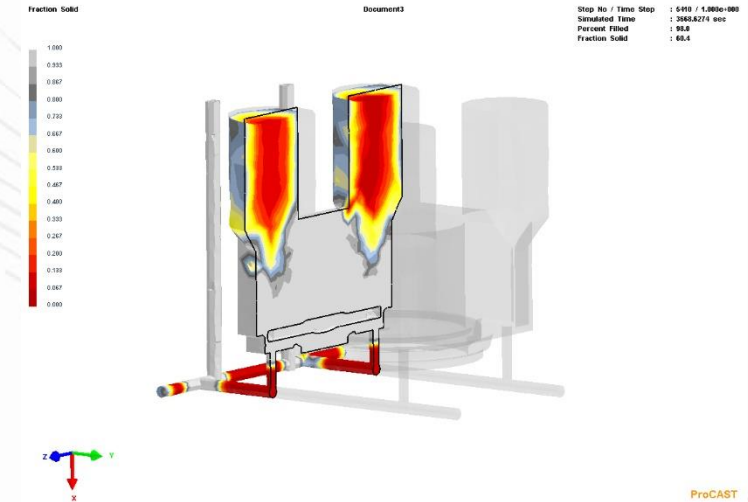
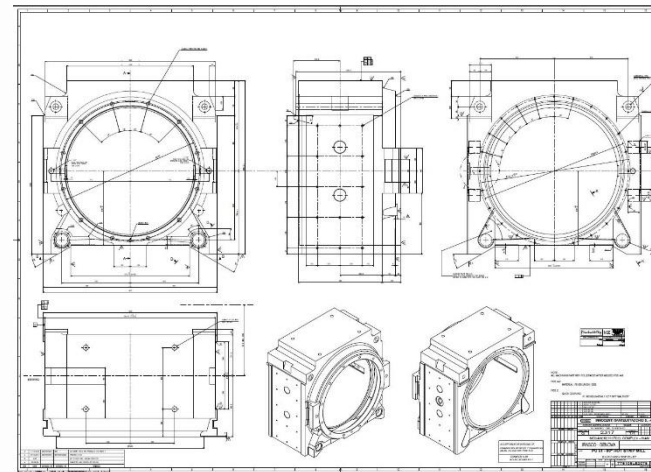
# Steel industry

- **Product design**

- ▶ **Facilities:**

Highly motivated and proficient design and engineering team:

- Conceptual design
    - Design and simulation





## Steel industry

### ► Modeling workshop

### ► Facilities:

- ✓ 2 CNC machine for foam machining of casting model
- ✓ Max. dimensions: 2500\*6000 mm



# Steel industry

## ► Modeling workshop

## ► Facilities:

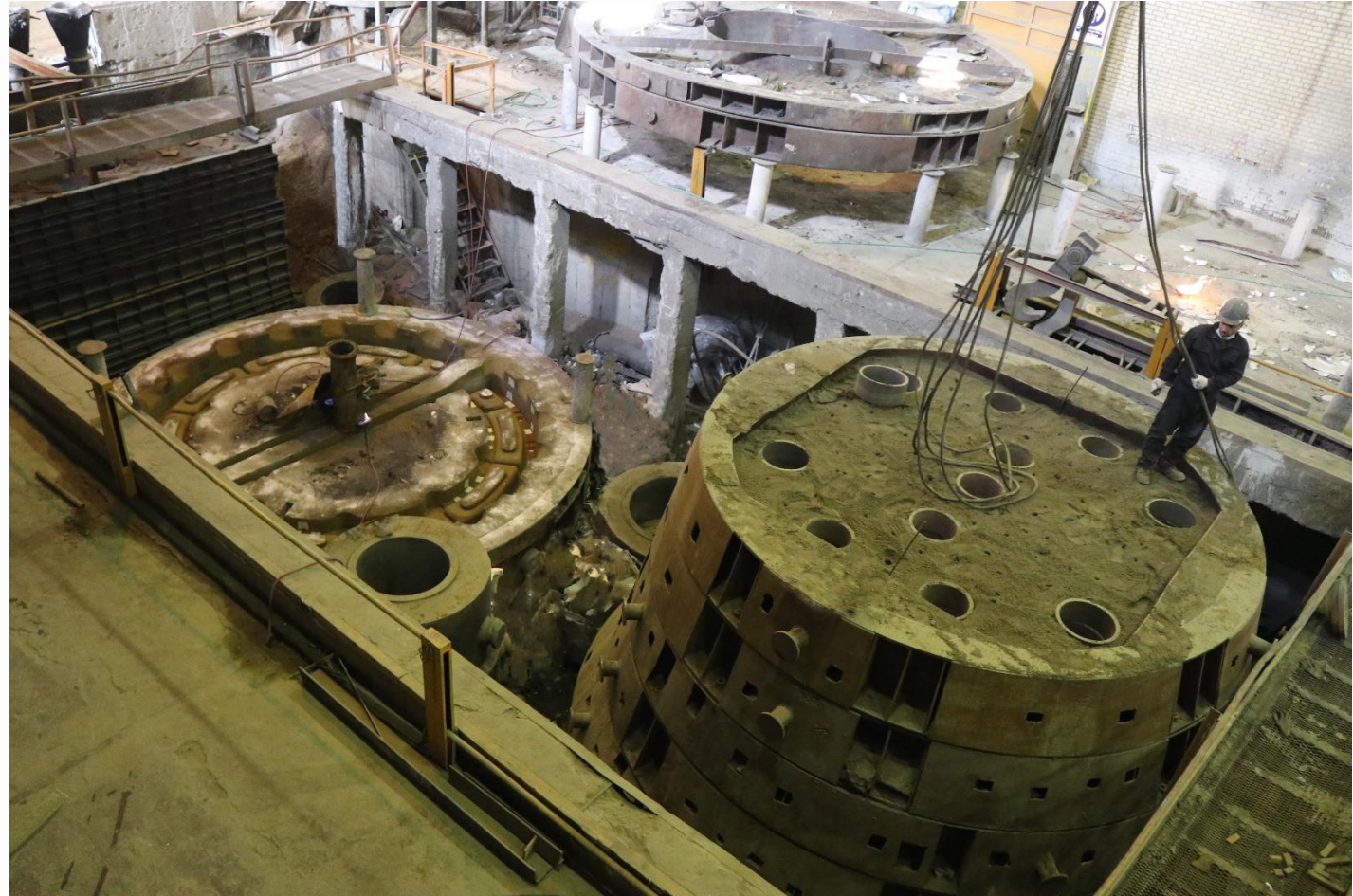
- ✓ Capacity for making of various wooden models of casting parts





## Steel industry

- **Molding**
  - ▶ Facilities:
  - ▶ 3 Pit with various dimension



# Steel industry

## ► Melting

## ► Facilities:

- **Melting furnaces**

✓ 16 Medium frequency Induction furnaces:

Capacities: 25, 17, 13, 6, and  
4 tons





## Steel industry

- ▶ Casting
- ▶ Facilities:
  - **Pouring Ladles**
    - ✓ 8 Various types of ladles  
Capacities: from 5 to 16 tones
    - ✓ 2 Special types of ladles  
Capacities: 35 and 25 tones



## Steel industry

### ► Cleaning and Heat Treatment

### ► Facilities:

- 4 Heat treatment chambers
- ✓ For Annealing, Normalizing, quenching, and Stress relieving of various sizes and shapes of casting parts
- ✓ Max. dimensions: 5\*6\*10 m
- ✓ Max. working temperature: 1100 °c
- ✓ Tem. accuracy:  $\pm 5$  °c





## Steel industry

### ▶ Testing

### ▶ Facilities:

- ✓ 11 NDT man
- ✓ UT and Mt test device
- ✓ Chemical analysis test
- ✓ Hardness test
- ✓ Remelt device
- ✓ Sand test
- ✓ Grain and impurity measurement software
- ✓ Metallography
- ✓ Hot Mounting




# Steel industry

- Quality plan:

**Ghaltak Sazan Sepahan Co.**  
Quality Certificate of Product

Purchase Order: 399124  
Part Name : GCK05001  
S.No: 01



Date: 1399/12/03

7th St. Second Phase East of Isfahan Industrial Zone, Isfahan - Iran  
Tel: +98 31 46412659 ; Fax: +98 31 46412660  
WebSite : www.ghaltaksazan.com ; E-mail: info@ghaltaksazan.com

ISO 9001:2015  
ISO 14001:2015  
OHSAS18001:2007

ISO 9001:2015  
ISO 14001:2015  
OHSAS18001:2007

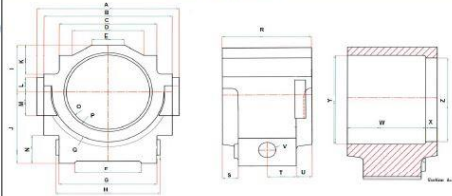
7th St. Second Phase East of Isfahan Industrial Zone, Isfahan - Iran  
Tel: +98 31 46412659 ; Fax: +98 31 46412660  
WebSite : www.ghaltaksazan.com ; E-mail: info@ghaltaksazan.com

**Ghaltak Sazan Sepahan Co.**  
Quality Certificate of Product

**Dimensional Control report**

Part Name : GCK05001  
Purchase Order : 399124  
Serial: 01  
Material: G52  
Standard: DIN 1483-CTB10

**Dimensional Control**



Dimension	A	B	C	D	E	F	G	H	I	J	K	L	M	N	O	P	Q	
As Per Drawing	1472	1329	1009	741	340	600	1010	1080	540	810	100	170	276	345	805	925	585	
Tolerance	±10	±10	±8.5	±6.5	±5	±6.5	±8.5	±9.5	±6	±7	±5	±4.1	±4.7	±5	±7	±7	±6	
Measured	1468	1325	1002	740	335	605	1007	1077	544	806	107	174	267	340	870	925	580	
Dimension	R	S	T	U	V	W	X	Y	Z									
As Per Drawing	915	155	300	165	180	810	105	925	805									
Tolerance	±7	±4.1	±4.7	±4.1	±4.1	±7	±3.7	±7	±7									
Measured	910	155	300	168	180	805	105	925	870									

QC Inspector  
A.POLADKIRAN

QC Manager  
M.Gholizadeh

7th St. Second Phase East of Isfahan Industrial Zone, Isfahan - Iran  
Tel: +98 31 46412659 ; Fax: +98 31 46412660  
WebSite : www.ghaltaksazan.com ; E-mail: info@ghaltaksazan.com

7th St. Second Phase East of Isfahan Industrial Zone, Isfahan - Iran  
Tel: +98 31 46412659 ; Fax: +98 31 46412660  
WebSite : www.ghaltaksazan.com ; E-mail: info@ghaltaksazan.com



## Oil and Gas industry

- **Sample products:**

# Steel industry





# Steel industry



## Steel industry

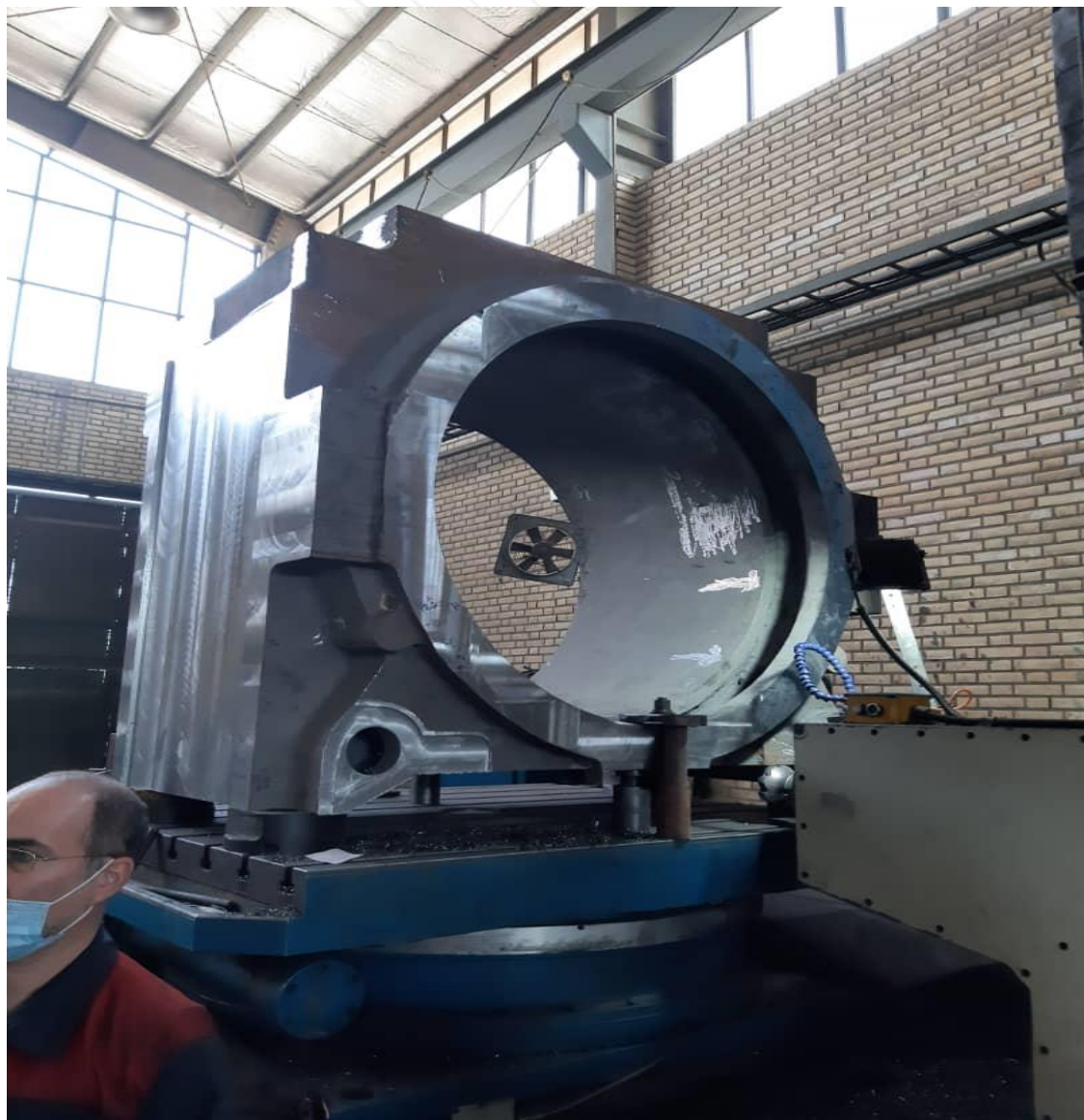




# Steel industry



# Steel industry





# Steel industry



## Steel industry





# Steel industry

- **Thank You**