

GHALTAK SAZAN SEPAHAN

Slag Pot Introduction



Holding Company

Holding Company

Casting plant for Rings & Rolls

Casting plant for Billet Casting , Cast Iron and Heavy Steel Parts

Machining Factory



Casting and Manufacturing Sites

GSCO

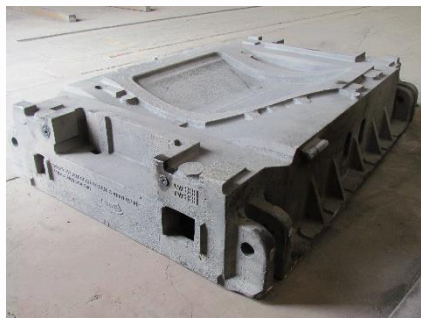
Casting plant for Billet

Casting plant for Cast Iron
and Heavy Steel Parts



- ✓ Total Melt Capacity: 215,000 Ton per year
- ✓ Total Area: 63,000 m²

Variety of Products



Cement Industry

Auto Industry

Billet and Ingots

Main Products

Oil and Gas industry

Steel Industry

Power Plant Industries



Casting plant for Billet

- Production of Billet by Continuous Casting



- Production of Carbon steel □ Low Alloy Steel and Alloy Steel Billet with sections :



100*100
120*120
125*125
130*130
150*150
160*160

Casting plant for Cast Iron and Heavy Steel Parts

- Production of Ingot Molds and Accessories
- Production of Cast Iron and Heavy Steel Parts up to 100 Ton



Slag Pot

For Various industries



Slag Pot

► Introduction

Slag Pot

► Slag Pot:

- One of the important components of a Steel making
- Transportation of slag and melt in various industries

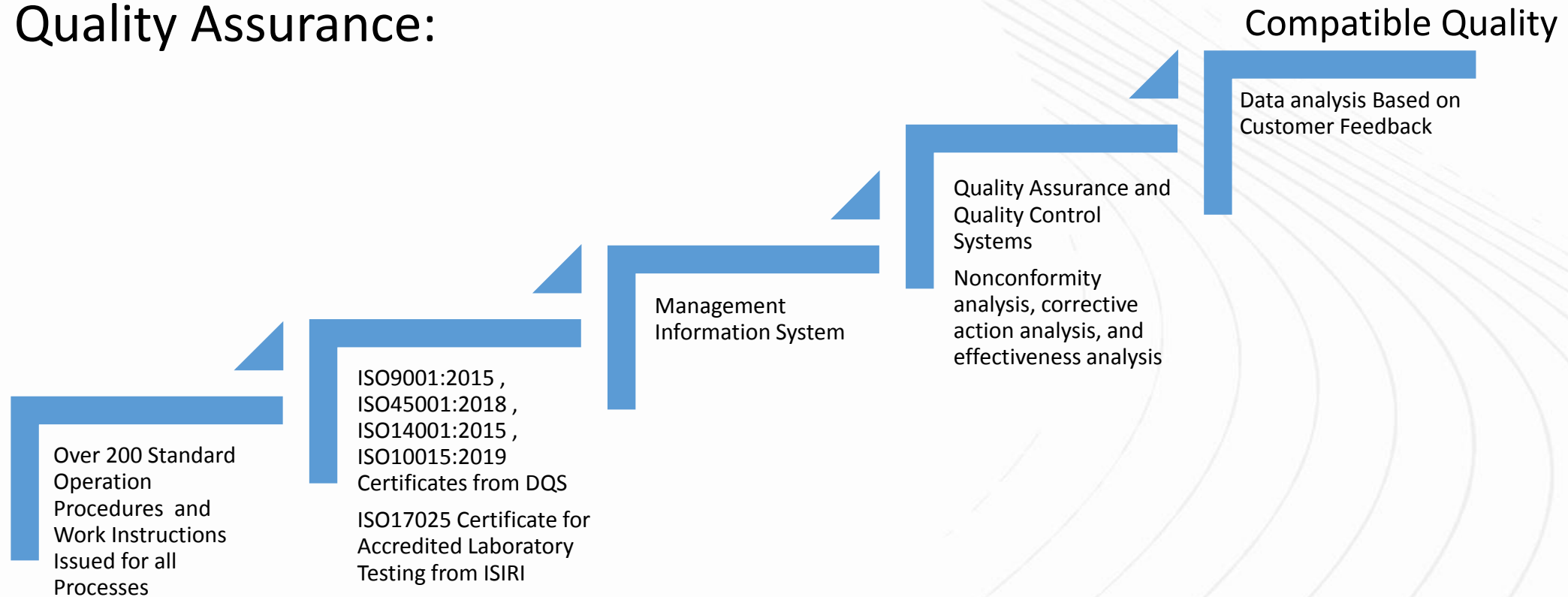


Slag Pot

► Design and Engineering

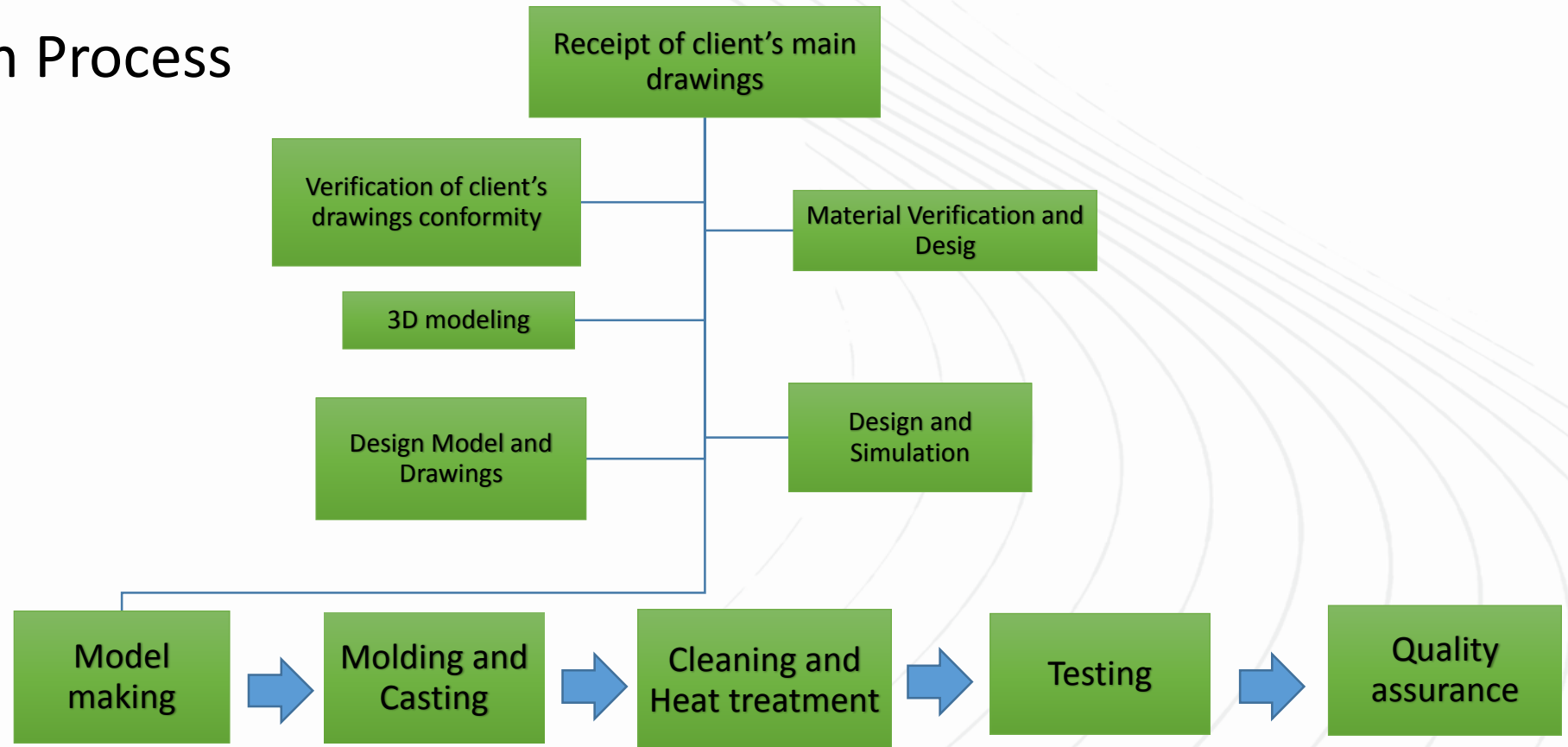
Slag pot

- Quality Assurance:



Slag Pot

- Production Process



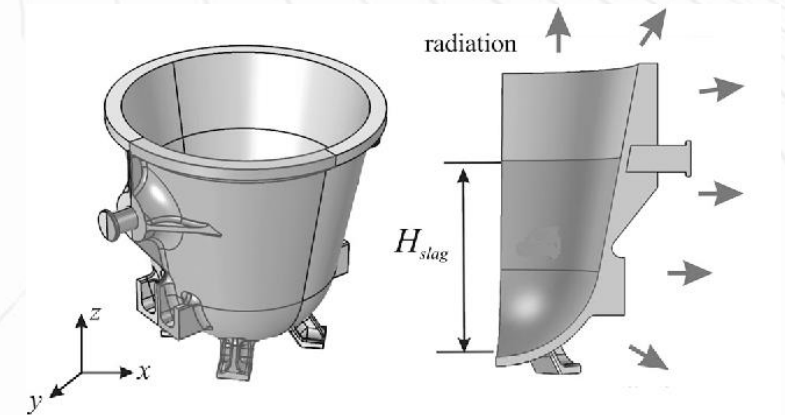
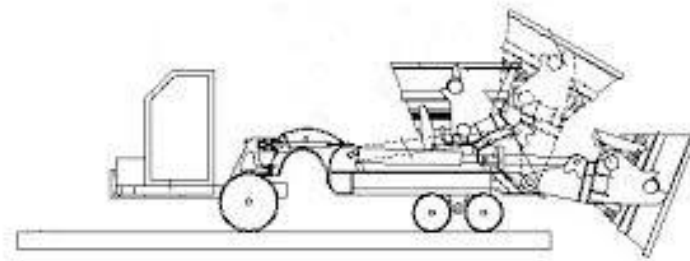
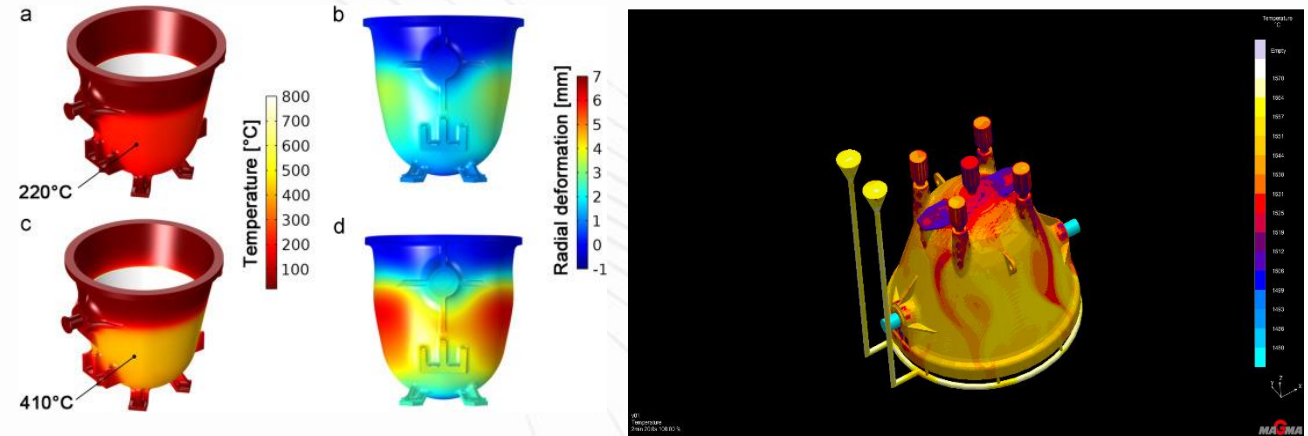
Slag Pot

- **Product design**

- ▶ **Facilities:**

Highly motivated and proficient design and engineering team:

- Conceptual design
- Design and simulation



Slag Pot

- ▶ **Modeling workshop**
- ▶ **Facilities:**
 - ✓ 2 CNC machine for foam machining of casting model
 - ✓ Max. dimensions: 2500*6000 mm



Slag Pot

► Modeling workshop

► Facilities:

- ✓ Capacity for making of various wooden models of casting parts



Slag pot

- **Molding**

- ▶ Facilities:
- ▶ 3 Pit with various dimension



Slag pot

► Melting

► Facilities:

- **Melting furnaces**

✓ 16 Medium frequency Induction furnaces:

Capacities: 25, 17, 13, 6, and
4 tons



Slag Pot

► Casting

► Facilities:

- **Pouring Ladles**

- ✓ 8 Various types of ladles

Capacities: from 5 to 16 tones

- ✓ 2 Special types of ladles

Capacities: 35 and 25 tones



Slag pot

► Cleaning and Heat Treatment

► Facilities:

- 4 Heat treatment chambers
 - ✓ For Annealing, Normalizing, quenching, and Stress relieving of various sizes and shapes of casting parts
 - ✓ Max. dimensions: 5*6*10 m
 - ✓ Max. working temperature: 1100 °c
 - ✓ Tem. accuracy: ± 5 °c



Slag pot

▶ Testing

▶ Facilities:

- ✓ 11 NDT man
- ✓ UT and Mt test device
- ✓ Chemical analysis test
- ✓ Hardness test
- ✓ Remelt device
- ✓ Sand test
- ✓ Grain and impurity measurement software
- ✓ Metallography
- ✓ Hot Mounting



Slag pot

- Quality plan:

Ghaltak Sazan Sepahan Co.
Quality Certificate of Product

Part Name: GPS3300I-01
Purchase Order: 0011856
Drawing No.: GI/105053/c
Certificatet No.: QC-96-129

ISO9001:2008
OHSAS18001:2007

2018-Jan-29
 7th St. Second Phase. East of Isfahan Industrial Zone , Isfahan - Iran
 Tel: +98 31 46412659 ; Fax: +98 31 46412660
 WebSite : www.ghaltaksazan.com ; E-mail: info@ghaltaksazan.com

CSMETAL İSTANBUL DEMİR ÇELİK SANAYİ VE TİCARET
LTD.Erenköy VD 2090537802
Bağdat Caddesi Playolu Sokak Anka Çıkmaşı.No.6 E2 Blok D.14

Part Name: Slag Pot(GPS1825I-01)
Contract Number: 19205876 0I
Date of Contract: 07/02/2019
Drawing No.: SLAG POT C.M.00(SKM-C36815043008121)
Weight:18420 Kg
Certificatet No.: QC-98-137

Ghaltak Sazan Sepahan Co.
Quality Certificate of Product

Client Name: Methu Group
Project Name: SLAG POT
Project Enforced: Ghaltak Sazan Sepahan Co.
Part Name & Serial: GPS3300I-01
Dwg./Rev. No.: GI/105053/c

Report No.: QC-96-129/02
Text Date :2018-January-24
Material: GS30Mn5
Standard : DIN 1683-GTB20

Dimensional Control

Schematic

Dimension	A	B	C	D	E	F	G	H	H2	J	K	L	M	N	O	P	Q	R	S	T
As Per Drawing	4804	4420	3960	3770	3430	1780	1650	940	840	4136	3195	3605	250	460	284	405	205	90	100	200
Tolerance*	±33	±33	±27	±27	±27	±21	±21	±16	±16	±33	±27	±27	±11	±13	±11	±13	±11	±9	±13	±11
MeasuredE	4819	4432	3983	3790	3453	1790	1657	938	845	4145	3205	3625	240	456	286	405	207	87	101	200

Dimension	U	V	W	X	Y	Z	A1	B1	C1	D1	E1	F1	G1	H1	I1	J1	K1	L1	M1
As Per Drawing	2120	520	350	915	100	118	109	80	80	80	2130	200	350	40	150	0100	R20	R130	R45
Tolerance*	±23	±14	±12	±16	±13	±13	±13	±9	±9	±9	±23	±11	±12	±8	±10	±9	-	-	-
MeasuredE	2124	522	345	920	105	123	114	82	81	80	2145	200	345	40	152	100	R20	R130	R45

QC Inspector: M.Palgin
 Signature:
 Date: 2018-Jan-29

App:
 Signature:
 Date: 2018-Jan-29

ISO 9001:2008
OHSAS18001:2007

7th St. Second Phase. East of Isfahan Industrial Zone , Isfahan - Iran
 Tel: +98 31 46412659 ; Fax: +98 31 46412660
 WebSite : www.ghaltaksazan.com ; E-mail: info@ghaltaksazan.com

Slag pot

- **Customers:**

Slag pot

- Khozestan Steel Company:



VOLUME (m3)	WEIGHT (kg)
17	27000



VOLUME (m3)	WEIGHT (kg)
30	38000

Slag pot

- MOBARAKE Steel Company:



Mobarakeh Steel Co.

VOLUME (m3)	WEIGHT (kg)
30	38000



VOLUME (m3)	WEIGHT (kg)
14	27000

Slag pot

- National Iranian Copper Industries CO



VOLUME (m3)	WEIGHT (kg)
17	29000



VOLUME (m3)	WEIGHT (kg)
17	30000



VOLUME (m3)	WEIGHT (kg)
8.5	21000

Slag pot

- Esfahan Zobahan CO



شرکت سهامی ذوب آهن اصفهان

VOLUME (m3)	WEIGHT (kg)
16	23000



Slag pot

- Iran Alloy Steel CO



VOLUME (m3)	WEIGHT (kg)
9.7	16000



Slag pot

- Melli Group Steel CO



VOLUME (m3)	WEIGHT (kg)
14	27000



Slag pot

- Yazd Steel CO



VOLUME (m3)	WEIGHT (kg)
14	25000



Slag pot

- Newco Ferronikeli Complex L.L.C



NEWCO FERRONIKELI COMPLEX L.L.C.

VOLUME (m3)	WEIGHT (kg)
5.5	11000



Slag pot

- Industeel (ArcelorMittal)



VOLUME (m3)	WEIGHT (kg)
17.9	33000



Slag pot

- Acerinox



VOLUME (m3)	WEIGHT (kg)
9	18500



Slag pot

- Severstal



VOLUME (m3)	WEIGHT (kg)
17.9	33000



Slag pot

- **Thank You**